

75% LIGHTER

85% THINNER

100% IMPROVEMENT

eARCHE. BREAKTHROUGH LIGHT WEIGHT SOLAR PANELS.

CALL 1300 090 187
energus.com.au



energos

ENERGUS IS A WORLD LEADING INNOVATOR IN SOLAR TECHNOLOGY

Established by renowned inventor and entrepreneur, Dr Shi, Energus is at the forefront of engineered solar panel solutions around the world; including the world's first solar powered train with Byron Bay Railroad Company.

Our solutions use engineering, science and data to maximise the return on your investment in solar power and deliver the most cost effective solar solutions, whether conventional or incorporating our unique and revolutionary lightweight panels, eArche.

energus.com.au/eArche

READY TO SAVE 30-40% ON YOUR ENERGY BILLS?

With energy costs rising dramatically it makes sense to install solar and Energus, using the latest technology, industry leading modelling tools and data from our unique solar calculator and satellite software, will customise the best solar solution for your needs. So you get the most back on your investment.

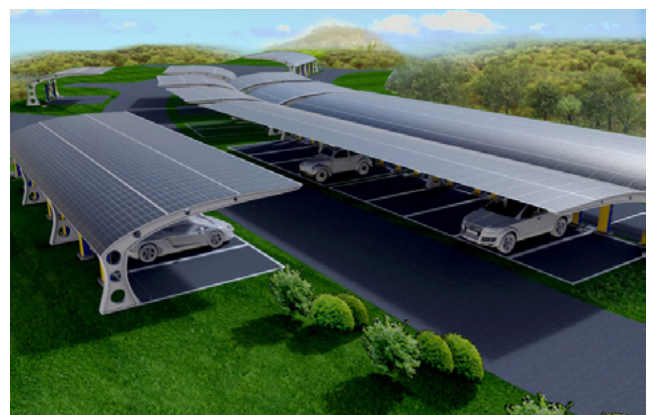
CONTACT US



Dr. Zhengrong-Shi

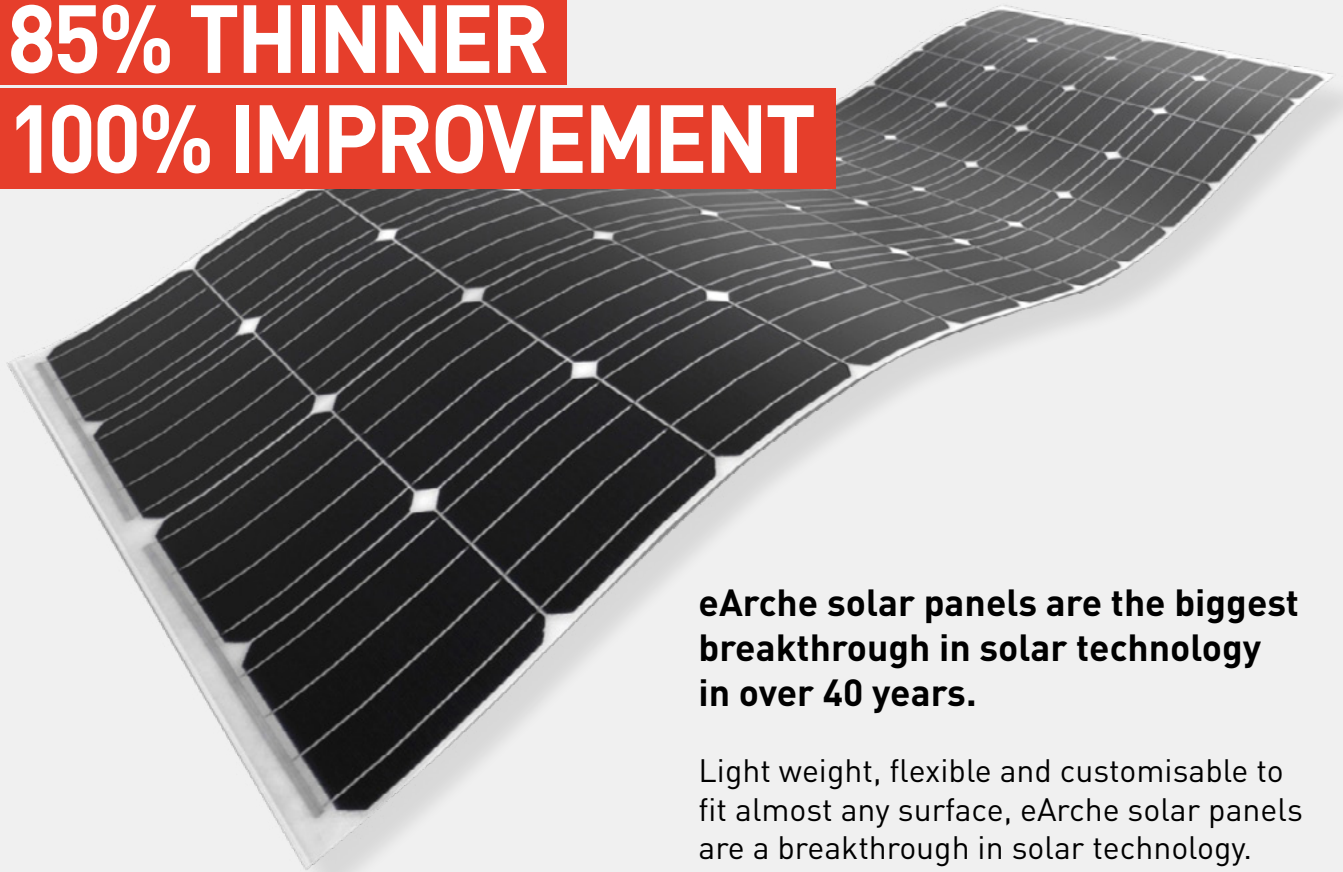


World's first solar powered train
Byron Bay Railroad Company with Energus



Energus Solar Car Park

75% LIGHTER
85% THINNER
100% IMPROVEMENT



eArche solar panels are the biggest breakthrough in solar technology in over 40 years.

Light weight, flexible and customisable to fit almost any surface, eArche solar panels are a breakthrough in solar technology.

Weighing just 25% of conventional solar panels, for the first time, households, farmers and businesses will have the option of installing solar panels on a wide range of surfaces.



FLEXIBLE

eArche can be customised to any size, is semi flexible and can be made semi transparent.



LIGHTWEIGHT

With eArche light weight structure it eliminates any restrictions of solar panel installation on commercial structures, reducing the weight by over 75%.



AESTHETICS

The streamlined design of eArche gives it the perfect innovative appearance to any building structure, with no Light Pollution.



INSTALL

Ease of installation onto a range of surfaces with different methods opens up the opportunity for a range of structures to benefit from eArche.



CUSTOM SHAPE

Manufactured to any size, tailor made to maximise surface coverage.



**25 YEAR PERFORMANCE
GUARANTEE**



**10 YEAR PRODUCT
WARRANTY**

energus.com.au/eArche



SEE ENERGUS AT WORK



We invite you to discover how our customised, engineered solutions have delivered substantial savings on power bills for households, businesses and farmers across Australia.

Some of our projects include:

- > CSR Bradford, Ingleburn NSW, 356kW
- > Dangrove Art Storage, Alexandria NSW 192kW
- > Plastic Forests, North Albury NSW, 99kW
- > Coonamble Feedlot, Coonamble NSW, 99kW
- > Willinga Park Stables, Bawley Point NSW, 75kW
- > Best Western Goulburn, Goulburn NSW, 60kW
- > Walgett Police Station, Walgett NSW, 50kW
- > Royans Dubbo Pty Limited, Dubbo NSW, 35kW
- > eArche - John Holland, Seven Hills NSW, 25.6kW
- > eArche - Byron Bay Railroad Company, Byron Bay NSW, 6.4kW
- > eArche - Betty Spears Child Care Centre, Tempe, 2.1kW



Find out now how your business can benefit from an engineered solar panel solution CALL 1300 090 187 energus.com.au

