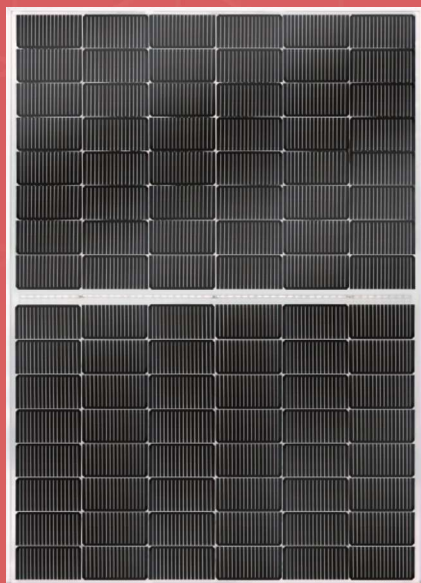


eArc

SMB450R-6X16DW-G

450 Watt

96 N Type Half Cell Monocrystalline Module



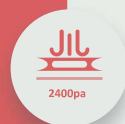
Ultra-light: With ultra-thin glass and innovative encapsulation technology, this module weighs only 14.6 kg. 40% lighter than conventional glass modules.



Fast-Installation: Easy handling and quick installation which reduce installation costs and improve safety.



Aesthetic and reliable: Flat appearance, with excellent loading capacity and hail resistance.



Durable: Excellent weather resistance and fire resistance. Certified to IEC 61215:2021, IEC61730:2023 and UL61730.

POWER OUTPUT RANGE 450 W

POWER TOLERANCE 0-5 W

12 Year Product Warranty

25 Year Linear Power Warranty



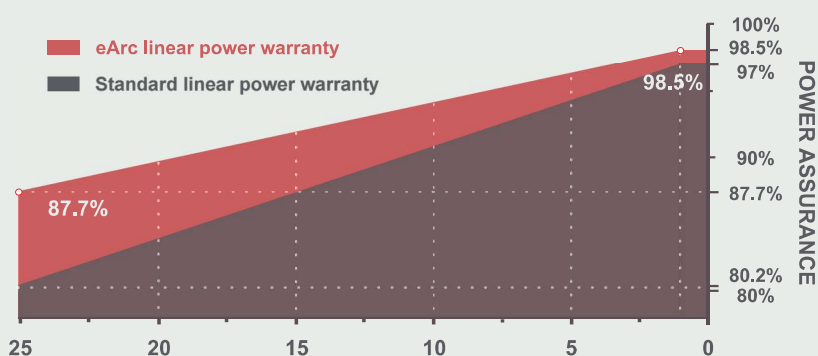
www.sunman-energy.com

ULTRA-LIGHT SOLAR PANEL

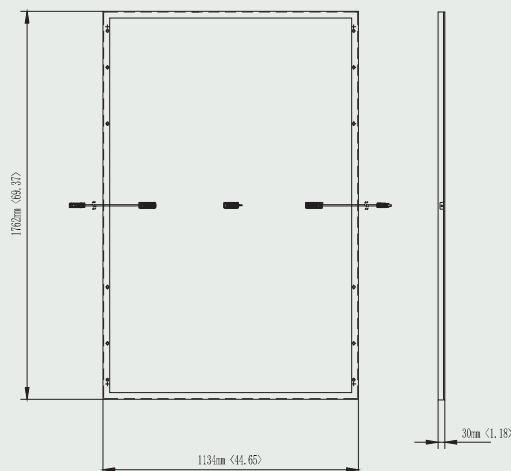
Made in China

LINEAR PERFORMANCE WARRANTY

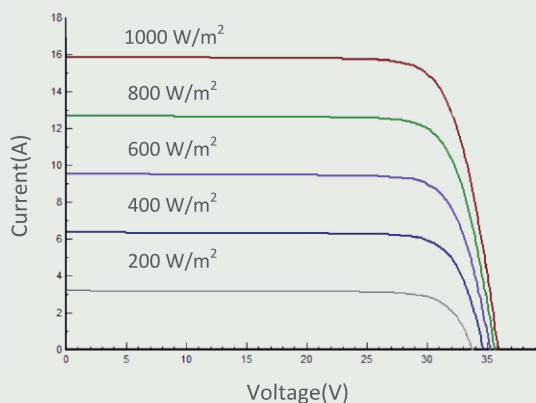
CAUTION: Read installation manual before using the product.
©2025 SunMan (zhenjiang) Co., Ltd. All rights reserved. Specifications included in this datasheet are subject to change without notice.



DIMENSIONS



I-V CURVE (450) @25



TEMPERATURE CHARACTERISTICS

Nominal Module Operating Temperature(NMOT) **41±2 °C**

Temperature Coefficient of P_{max} **-0.29 %/°C**

Temperature Coefficient of V_{oc} **-0.25 %/°C**

Temperature Coefficient of I_{sc} **0.045 %/°C**



SMBDW IEC EN 2025B 9 TM

ELECTRICAL CHARACTERISTICS

STC	SMB450R-6X16DW-G
Maximum Power (P_{max})	450
Maximum Power Voltage (V_{mp})	30.12
Maximum Power Current (I_{mp})	14.95
Open-circuit Voltage (V_{oc})	35.92
Short-circuit Current (I_{sc})	15.89
Module Efficiency (%)	22.52
Operating Temperature (T_{98})	-40 °C to 70 °C
Maximum System Voltage	1500 V DC (IEC)
Maximum Series Fuse Rating	25 A
Application Class	Class A
Power Tolerance	0/+5 W
Fire class rating	Class C

STC: Irradiance 1000W/m², Cell temperature 25 °C, AM=1.5.

Tolerances of P_{max} , V_{oc} and I_{sc} are within ±5%

NMOT	SMB450R-6X16DW-G
Maximum Power (P_{max})	364.8
Maximum Power Voltage (V_{mp})	30.40
Maximum Power Current (I_{mp})	11.99
Open-circuit Voltage (V_{oc})	36.10
Short-circuit Current (I_{sc})	12.70

NMOT: Irradiance 800W/m², Ambient temperature 20 °C, AM=1.5, Wind speed 1 m/s.

MECHANICAL CHARACTERISTICS

Solar Cell	N Type Monocrystalline silicon(210mm half cell)
No. of Cells	96 (6×16)
Module Dimensions	1762×1134×30mm
Weight	14.6kg ±3%
Backsheet	White
Frame	Anodized Aluminium Alloy
J-box	IP 68 rated
Output Cables	Photovoltaic technology cable 4.0 mm 2, (+)300 / (-)300 mm
Connector	Stäubli Electrical Connectors AG PV-KST4-EVO2A/xy / PV-KBT4-EVO2A/xy

PACKAGING CONFIGURATION

	20' GP	40' HC
Module per pallet	36	36
Pieces per container	216	864